

ART CLAY™ SILVER Basic Instruction Guide #036

UV Resin Rose Pendant Level: Intermediate/ Advanced

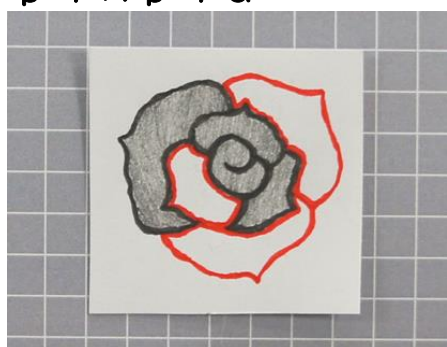


Completed piece (Left: project piece)

<Materials>

Art Clay Silver 650/1200 Clay Type	3g
Art Clay Silver 650/1200 Syringe Type	5g
Art Clay Silver 650/1200 Paste Type	some
Flat screw eye	1pc
G-009-2 Synthetic Gemstones/Roundφ2/ Rose de France	1pc
G-009-3 Synthetic Gemstones/Roundφ3/ Rose de France	1pc

<Step by Step Guide>



Design pattern
(Diameter approx. 2.7cm).

Grey color is clay part, and red line is syringe.



1) Place a cooking sheet on the design pattern, and copy the lines with a pencil.



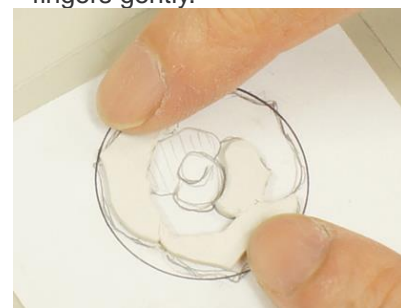
2) Make a ball with 3g of clay. Place a pair of 1mm plastic strips on each side. Roll out 1mm thick into a round shape with a mini roller. Turn the cooking sheet back and place on the clay. Copy the pattern by pressing with your fingers gently.



3) Cut out the clay with the pattern. Place something flat and heavy such as a ceramic kiln plate on the piece so as to dry flat. Then, dry.



4) Paint some Paste Type on join areas.



5) Attach the pieces according to the pattern, and dry again.



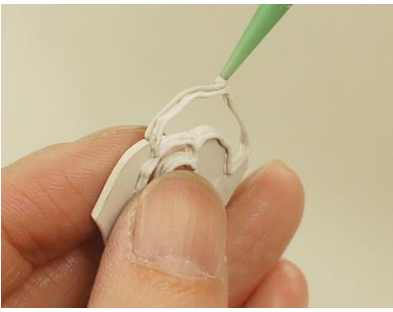
6) Extrude the syringe on the red line with a green nozzle.



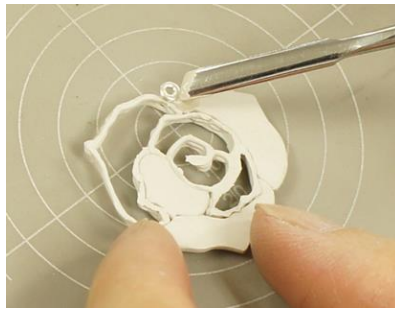
7) Fix the syringe line with a moistened fine pointed brush.



8) Repeat extruding syringe line and drying up till third layer.



- 9) Fill any gaps between syringe lines and joins with some Syringe or Paste Type, and smooth with a spatula, and dry.



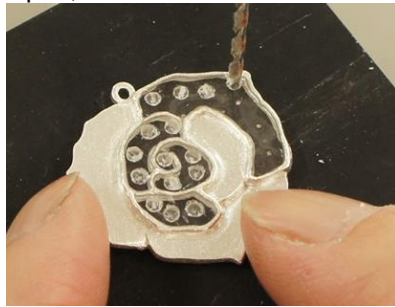
- 10) Attach the flat screw eye on the top back (see image). Dry completely, and smooth the entire piece with a red sponge sanding pad, and fire.



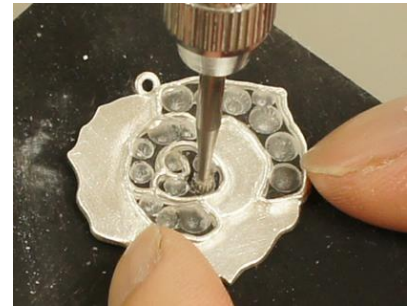
- 11) Burnish edges with a burnisher. Cover with tape the backside of the openwork parts.



- 12) Pour some UV resin into the openwork area up to the surface, and cure for 5 minutes in a UV light Box.



- 13) Drill shallow holes with a ϕ 1.5mm drill bit for stones.
*Do not drill through.



- 14) Paint a little amount of water on the piece, and fix the holes with ϕ 2 and ϕ 3 stone-setting burs for stones. Wash the piece with water.

TIP: Fixing holes with stone setting burs makes the facets more beautiful because only a small amount of UV resin is used and the light reflects more than opening holes with a drill bit.



- 15) Pour a small amount of UV resin into the holes, set stones into the holes and cure the front side for 2 minutes and back side for 5 minutes in UV light box. Then, finish.