

# ART CLAY<sup>TM</sup> SILVER **Basic Instruction Guide #055**

## Heart Pendant with Silver Wires

Level: Basic/ Intermediate



### <Materials>

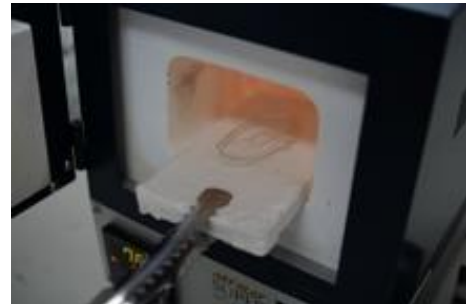
Art Clay Silver Clay Type	10g
J-012-3 Fine silver wire $\phi$ 0.5mm	Aprox. 40cm
K-263 AC Exclusive Pendant Bail A (Shell)	1pc
Any round cut synthetic stones $\phi$ 2mm	2pcs

Completed piece

### <Step by Step Guide>



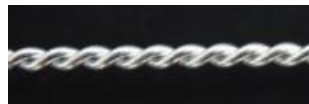
1. Draw a design on the cooking sheet with a pencil. (Size approx. 3cm wide, 2cm long)



2. Prepare the wire. Can twist the wire easily after annealing at 800C/1472F for 1-2 minutes in a kiln.



Bad (Loose)



Good (Tight enough)

3. Fold the wire in half. Attach the folded part with some tape on a table, and twist the wires tightly together so as not to make any gaps between wires.



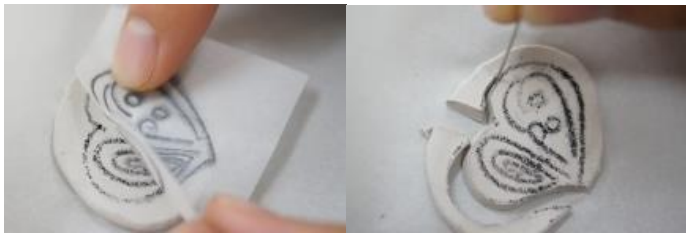
4. Cut the twisted wires with some nippers and make the shape following the design pattern. The 2 little circles are for setting stones.



5. Flatten firmly with some flat nose pliers so as not to damage.



6. Turn over the design pattern and trace the line with a STABILO pencil.



7. Roll out 10g of the clay into 2mm thick, press the STABILO pencil side on the clay lightly to trace the design. Cut out the clay following the design with a needle.



8. Lightly embed the twisted wire onto the clay following the design. After finishing embedding, press the surface with a flat hard sheet to embed securely half of wire into the clay.



9. Put some Paste Type on the screw of the bail, and insert into the heart piece until it sits firmly, and dry.



10. After drying, smooth the entire piece with a medium fine file. Drill 2 pilot holes for the stones with a  $\phi 1.5$  drill bit, and carve 1mm depth on the holes with a  $\phi 2$  drill bit. Set the synthetic stones by a small amount of syringe or paste.



11. Draw decoration dots around the stones with Syringe Type, smooth with a paint brush, dry and fire at 800C/ 1472F for 5 minutes.



12. Polish the entire piece with a stainless brush and sponge sanding pads and finish. Can finish with some liver of sulfur if you like.



<Optional piece using silver wires>