

Pearl Earrings

Level: Basic/ Intermediate

<Materials>



Completed piece

Art Clay Silver Clay Type	Approx. 8g
Art Clay Silver Paste Type	A small amount
Japanese Akoya pearl half-drilled 4.5-5mm (any sizes)	2 pcs
Ear wires/ ear hooks/ findings for ears/ hinged ear screws	A pair
Small round jump ring (K-0001)	2 pcs
Medium round jump ring (K-0002)	2 pcs
Small flat screw eye (K-0038)	2 pcs
Screw eye 2 φ0.8 (K-0022)	2 pcs

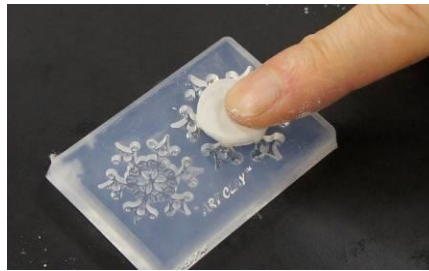
<Tools>

Art Clay Exclusive Clear Silicone Mold Snow Flake (The sample is used F-971), cotton swab, #320 grit sandpaper, cooking sheet, medium fine file, φ 1.5mm drill bit, nipper, craft knife, epoxy glue, stainless steel brush, burnisher, 2 flat pliers

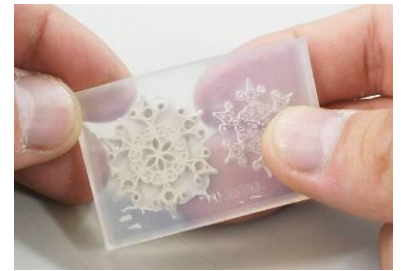
<Step by Step Guide>



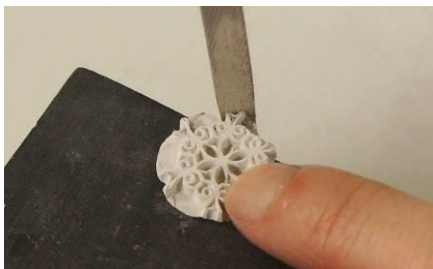
1. Use the larger mold and paint a small amount of food oil.



2. Knead the 4g of clay well and fill into the center of the mold. Check that it is filled in without any gaps.



3. Scrape off extra clay from the mold. After drying completely, remove from the mold carefully. Make another piece to repeat Steps 1 and 2.



4. Shape with a medium fine file.



5. Flatten the back with a #320 grit sandpaper.



6. Drill a hole with a φ 1.5mm drill bit to thread the round jump ring through later.



7. Cut the tip of the small flat screw eye with a nipper.



8. Engrave another hole on the back with a craft knife, opposite from the hole made in Step 6 to embed the screw eye.



9. Attach the flat screw eye with a small amount of Paste Type. After drying completely, fire at 800C/1472F for 5 minutes. After cooling down, polish the entire piece with a stainless steel brush and a burnisher.



10. Attach the screw eye 2 into the hole of the pearl with a small amount of epoxy glue.



11. Set the medium and small round jump ring and the ear wires with some flat pliers. Then, set the flat screw eye and screw eye 2 in the opposite side. Finish.