



Thank you for choosing Imagepac Stampmaker

To help you make your first stamp please follow the 3 video Tutorials included on the CD and use the instructions. Before starting, check that you have all the necessary items to make the stamp. Store your imagepac sachets in the dark until ready to use.

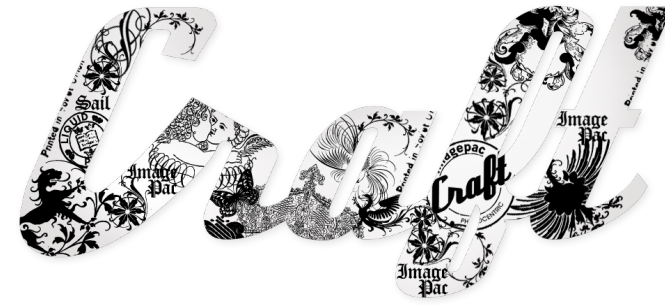


Kit content

- 1 UV Imagepac Stampmaker
- 2 Magnetic clamp max A7
- 3 Mask A8 and A9
- 4 Consumables (**store in dark**)
 - 4 Imagepac sachets Medium A7
 - 4 Imagepac sachets Small A8
 - 2 Imagepac sachets Mini A9
- 5 Test Negative
- 6 Clear plastic tray
- 7 CD Tutorial and Instructions
- 8 Brush
- 9 Timer
- 10 3 Imageblack inkjet negative printing sheets

Items you need

- Inkjet printer
- Scissors
- Sink or tray with warm water
- Washing up liquid (dish soap)
- Selfinker or acrylic block



1. Preparing negative

1. Please make your first stamp and negative following the 3 video Tutorials on the CD. The inkjet printer settings must be adjusted to the darkest printing option. The dark part of the negative must be black and opaque. Usually selecting “specialty” or “matte” paper and increasing the printing quality is sufficient. Please keep your imagepac sachets in the dark until ready to use.
2. Select the A7, A8 or A9 sachet that corresponds best to your stamp or stamps size. The negative must cover the full area of the sachet and the design must have 3mm margin from the edge of the negative. A template with the 3 negative sizes can be found on the CD. “A7 A8 A9 Word Template”.
3. Design a negative in black and white (1bit file). In order to do so you can use software such as MS Word, Corel, Photoscape and others. More information can be found on the CD “Create your negative”.

Example: Make a text negative using MS Word 2010

1. Open a new document. On the main tool bar click Insert / Text box. Select “Simple text box”.
2. On the main tool bar click Format and on “Size” section insert the size of the selected sachet. (Example. A7 10cm height x 6.2cm width).
3. On “Format” / “Shape Fill” select Black (the box will then turn black).
4. On “Format” / “Text Fill” select White.
5. Click on the border of the box and right click to open the menu. Select “Format Shape” / “Text box” and adjust the 4 internal margins to 0.3cm. Close.
6. Click inside the box and start writing.

4. Confirm that the inkjet printer settings are set to the darkest possible with “specialty” or “matte” paper. Print the negative using Imageblack film for inkjet printers. Print on the side that sticks to a damp finger.

Sachets and Sizes

37 mm / 1 3/7”

A9

47 mm / 1 3/4”

47 mm / 1 3/4”

A8

62 mm / 2 3/8”

62 mm / 2 3/8”

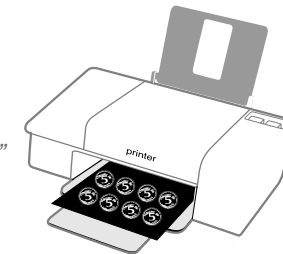
A7

100 mm / 4”

Imageblack. Print the negative on the side that sticks to a damp finger



Print negative



IMPORTANT

The inkjet printer settings must be adjusted to the darkest printing option. The dark part of the negative must be black and opaque. Usually selecting “specialty” or “matte” paper and increasing the printing quality is sufficient.

TIP

Remember that you can make more than one stamp per sachet. Check the document “create your negative” for more information regarding negatives, laser printers and how a negative works.



2. Exposing

1. Warm up your UV Imagepac Stampmaker by turning it on for 1 minute while preparing the components.
2. Open the clamp by pushing one corner to slide apart. Lay the components as shown in illustration 1 for A8 and A9 sachets. For A7 sachets please check illustration 2. **Check you have assembled the components in the correct order, negative reading side up and "imagepac" reading side up.**
3. Close the clamp and press down firmly in the middle to level imagepac gel.
4. Set the timer to 1 min 40 sec (100sec)
5. Slide the clamp into the UV stampmaker with the 6sec label facing upwards and count 6 seconds. (illustration 3)
6. Take out the clamp, flip the clamp over so the label 100sec is facing upwards, slide into stampmaker, activate timer and expose 1 min 40 sec (100sec). (illustration 4)
7. After 100sec, switch off the stampmaker.

TIPS

Keep your imagepac sachets in the dark until ready to use. The negative must cover the full area, use the mask for A8 and A9 sachets. Check you have assembled the components in the correct order, negative reading side up and "imagepac" reading side up.



Turn on and warm up for 1 min.

1 Component order for A8 A9



Clamp lid with
6" label

Gel
(word "imagepac"
reading side up)

+

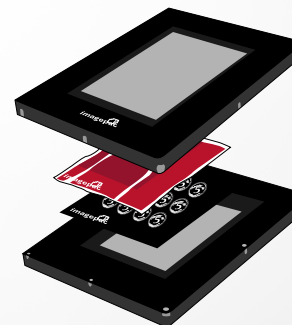
Mask

+

Negative
(reading side up)

Recessed clamp lid
100" label
Close clamp and press
firmly in the middle until gel
spreads even

2 Component order for A7



Clamp lid with
6" label

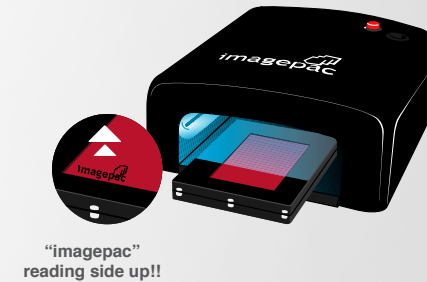
Gel
(word "imagepac"
reading side up)

+

Negative
(reading side up)

Recessed clamp lid
100" label
Close clamp and press
firmly in the middle until
gel spreads evenly

- 3 1st Turn on and warm up for 1 min. Exposure 6 seconds.

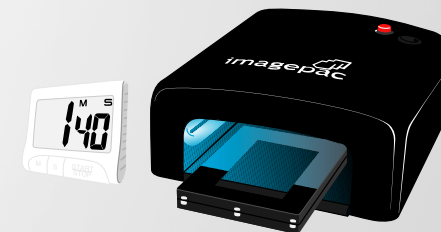


"imagepac"
reading side up!!

Turn the clamp over



- 4 2nd. Exposure 100 seconds





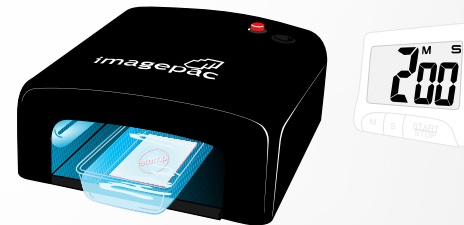
3. Washing and cutting

1. After the 100secs, turn off the UV stampmaker, take out the clamp, open it and take the sachet out.
2. Cut around the edges just inside the seal.
3. Peel off the loose sheet of plastic and discard. The other plastic sheet is stuck to the stamp, do not peel.
4. Using warm water, washing up liquid (dish soap) and the brush, brush the sachet until there is no liquid resin on the stamp.
5. Rinse with water until clean.



4. Hardening

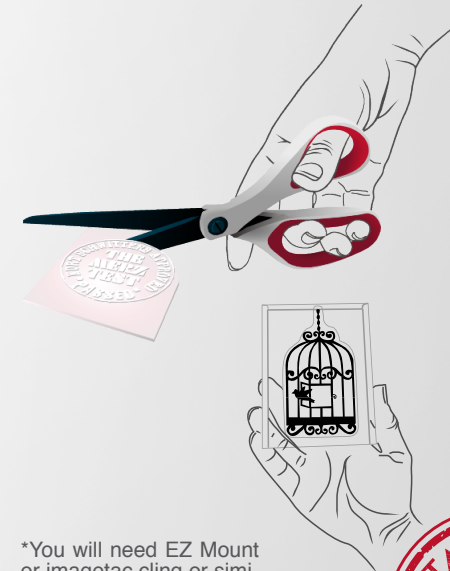
1. Place your stamp in the plastic tray and fully cover the stamp with water.
2. Slide the tray into stampmaker and expose to the light for 2 minutes.
3. After 2 minutes switch off stampmaker, remove the stamp from the water and dry it.



TIP
MAKE SURE THE STAMP IS CLEAN AND NO LIQUID RESIN IS LEFT. PAY SPECIAL ATTENTION TO CLEANING THE SMALLEST CHARACTERS

5. Mounting

1. Trim to size.
2. Mount to a self inker or an acrylic block*.



*You will need EZ Mount or imagetac cling or similar to mount the stamp to an acrylic block.

